

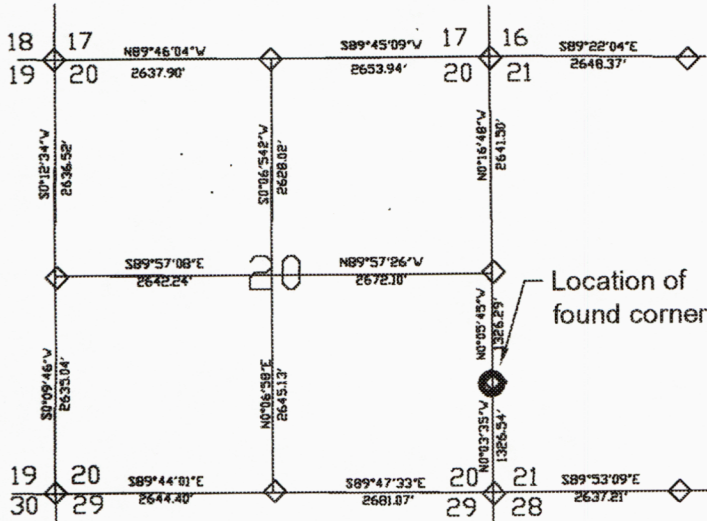
State of Wyoming Corner Record

(In compliance with the *CORNER PERPETUATION AND FILING ACT*, Wyoming Statutes, 1997, Section 33-29-140 et. seq., and the Rules and Regulations of the Board of Registration for Professional Engineers and Professional Land Surveyors)

Reverse side of this form may be used if more space is needed.

Record of original survey and citation of source of historical information (if corner is lost or obliterated). Description of corner monumentation evidence found and/or monument and accessories established to perpetuate the location of this corner. Sketch of relative location of monument, accessories, and reference points with course and distance to adjacent corner(s) (if determined in this survey). Method and rationale for reestablishment of lost or obliterated corner.

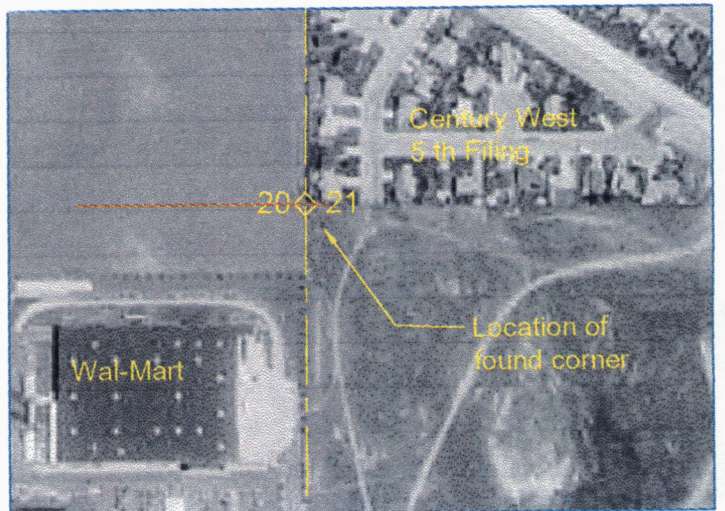
Record: 2" Brass Cap LS 519 S 1/16 20/21
 Found: 2" Brass Cap Steel pipe as shown below



Note:
 See attached sheets for photographic views of the area surrounding the monument location.



Cap Stamping Detail



Vicinity Map

Date of Field Work: April 2002

Office Reference: 2310 - Storey Blvd

CROSS INDEX DIAGRAM

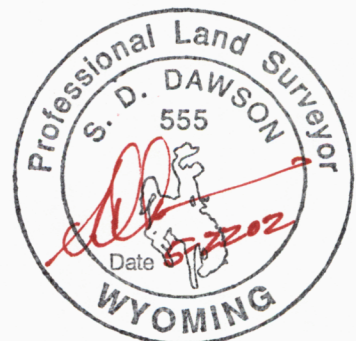
1	2	3	4	5	6	7	8	9	10	11	12	13	14	15	16	17	18	19	20	21	22	23	24	25	
A																									A
B																									B
C	6																								C
D		5																							D
E			4																						E
F				3																					F
G					2																				G
H						1																			H
I																									I
J																									J
K																									K
L	18	17	16	15	14	13																			L
M																									M
N																									N
O																									O
P	19	20	21	22	23	24																			P
Q																									Q
R																									R
S																									S
T	30	29	28	27	26	25																			T
U																									U
V																									V
W																									W
X	31	32	33	34	35	36																		X	
Y																									Y
Z																									Z



Washington
 Infrastructure Services
 5920 Yellowstone Road
 Cheyenne, Wyoming 82009
 307-634-1101

This corner record was prepared by me or under my direction and supervision.

[Signature]
 SEAL & SIGNATURE



Corner Name: S 1/16 Section 20/21

Section: 20

T 14N

R 66W

6th

P.M. Cross-Index No: Q-9

29

SBRPEPLS/March 1994; PLSW January 1998

RECORDED 12/19/2002 AT 1:54 PM REC# 339045 JK# 1691 PG# 1403
 WEBRA K. LATHROP, CLERK OF LARAMIE COUNTY, WY PAGE 1 OF 2

May 2002
Storey Blvd
2310

Location of
monument

Section 20
S 1/4 S 20/21
View North

May 2002
Storey Blvd
2310

Location of
monument

Section 20
S 1/4 S 20/21
View East

May 2002
Storey Blvd
2310

Monmument is
Hidden behind fence
in this view

Section 20
S 1/4 S 20/21
View South

May 2002
Storey Blvd
2310

Location of
monument

Section 20
S 1/4 S 20/21
View West

